

Průměrné % zastoupení jednotlivých frakcí ve shlucích (pro některé lokality nebyly hodnoty granulometrie známe)

Shluky vytvořené na základě BBcelk

	shluk 1	shluk 2	shluk 3	shluk 4	shluk 5
Počet lokalit	5	9	4	3	1
Počet lokalit se známou granulometrií	5	9	3	3	1
% frakce 0,063	0,27	0,48	0,23	0,22	0,65
% frakce 0,20	0,82	2,04	1,24	0,76	2,10
% frakce 0,63	7,07	9,98	5,40	9,34	8,17
% frakce 2,00	12,07	9,42	12,06	17,26	14,39
% frakce 6,30	9,36	6,96	9,12	10,53	8,33
% frakce 20	21,58	15,84	20,26	25,64	15,79
% frakce 63	39,16	38,46	36,39	32,99	36,27
% frakce 200	9,66	16,81	15,30	3,25	14,31

Shluky vytvořené na základě fytosnímků (7 shluků)

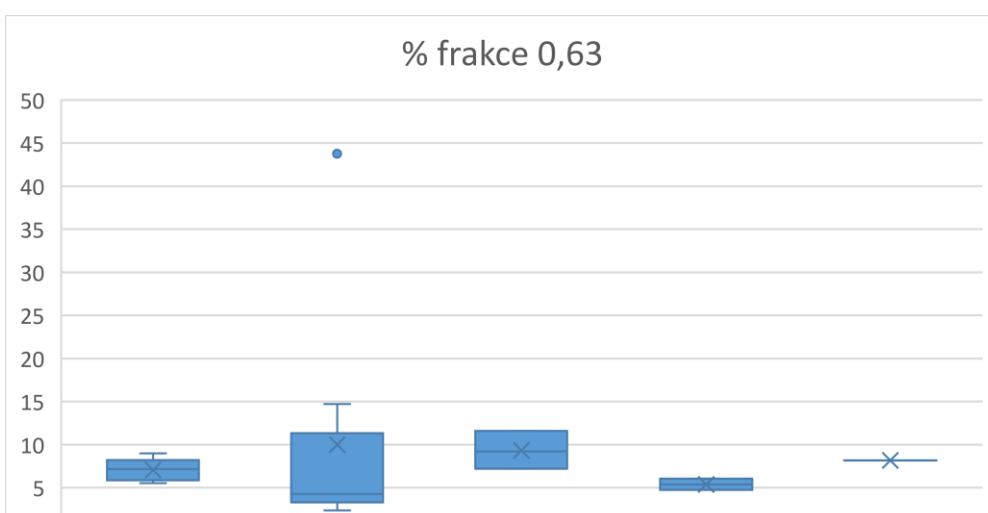
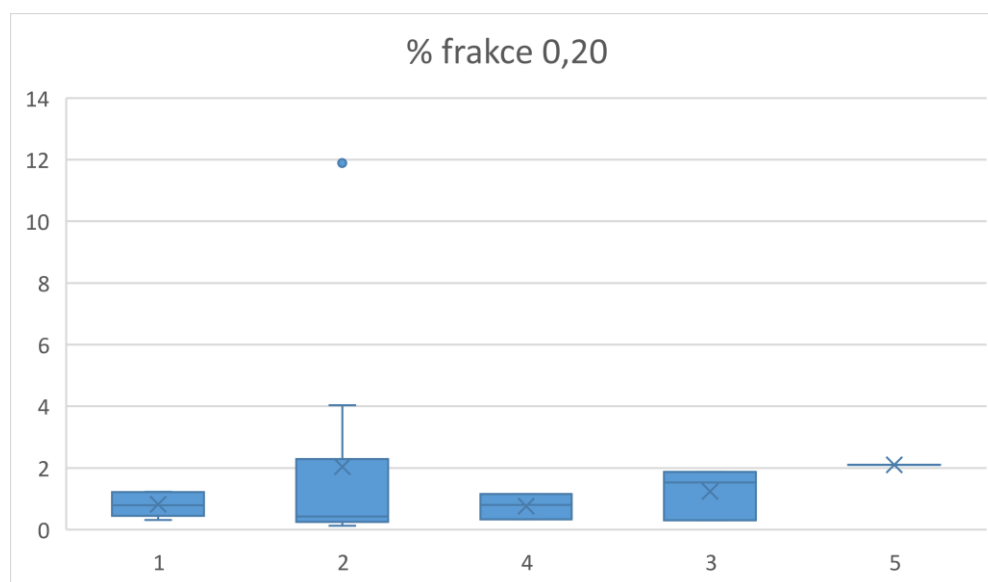
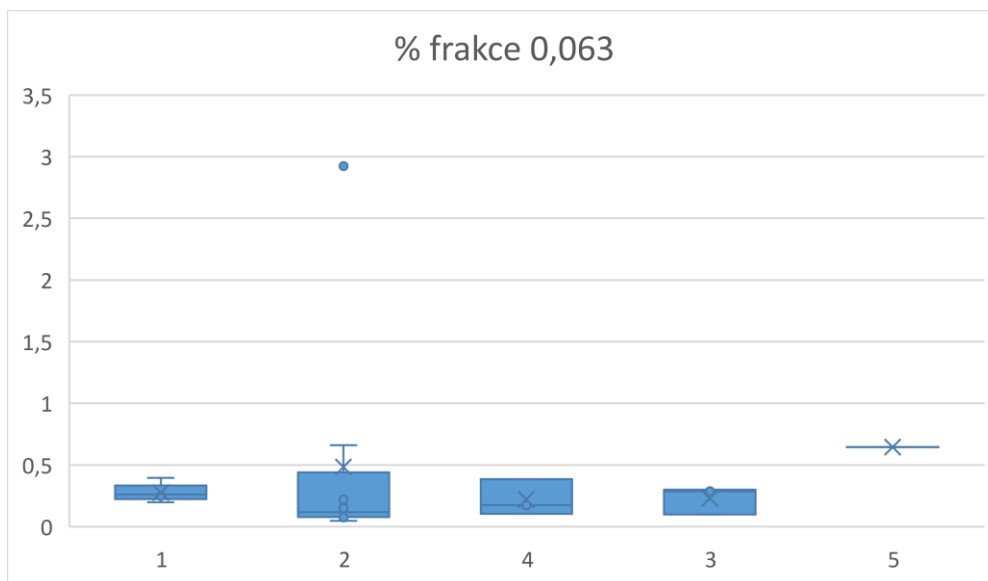
	shluk 1	shluk 2	shluk 3	shluk 4	shluk 5
Počet lokalit	13	1	3	1	4
Počet lokalit se známou granulometrií	13			1	4
% frakce 0,063	0,36			0,38	0,26
% frakce 0,20	1,36			1,16	0,91
% frakce 0,63	9,11			7,21	6,07
% frakce 2,00	11,21			18,98	12,50
% frakce 6,30	7,31			12,04	11,67
% frakce 20	17,90			26,18	22,77
% frakce 63	38,46			29,86	37,68
% frakce 200	14,29			4,19	8,13

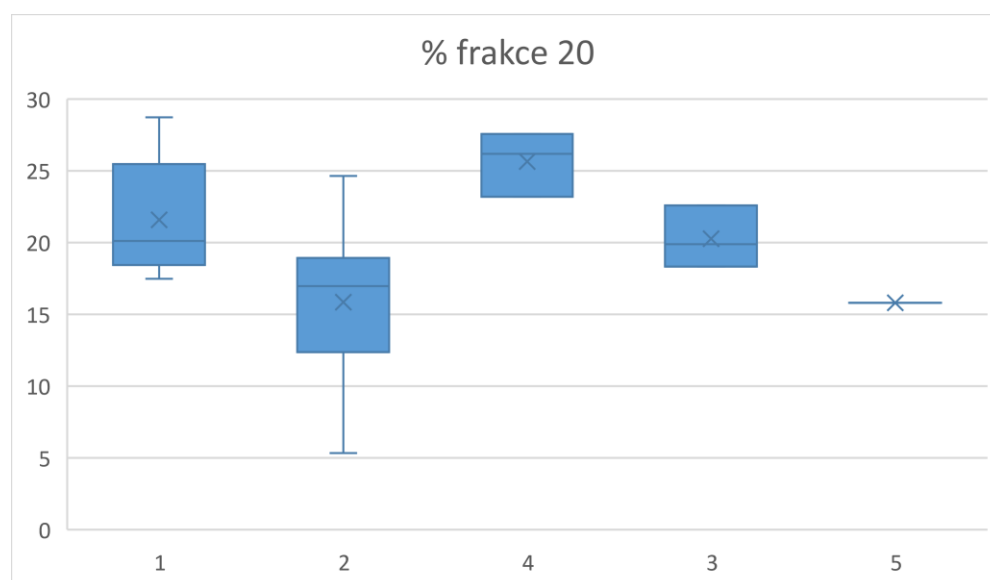
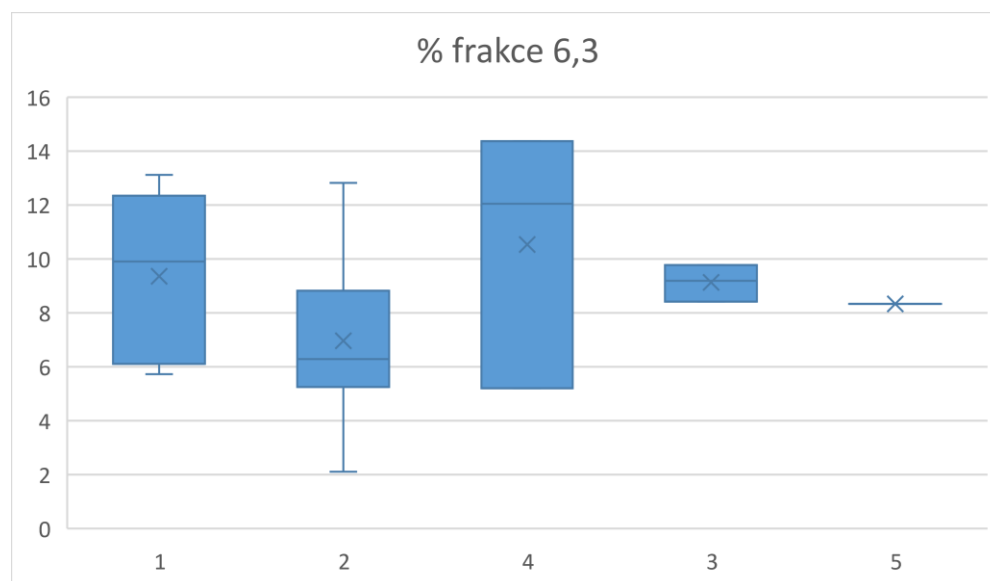
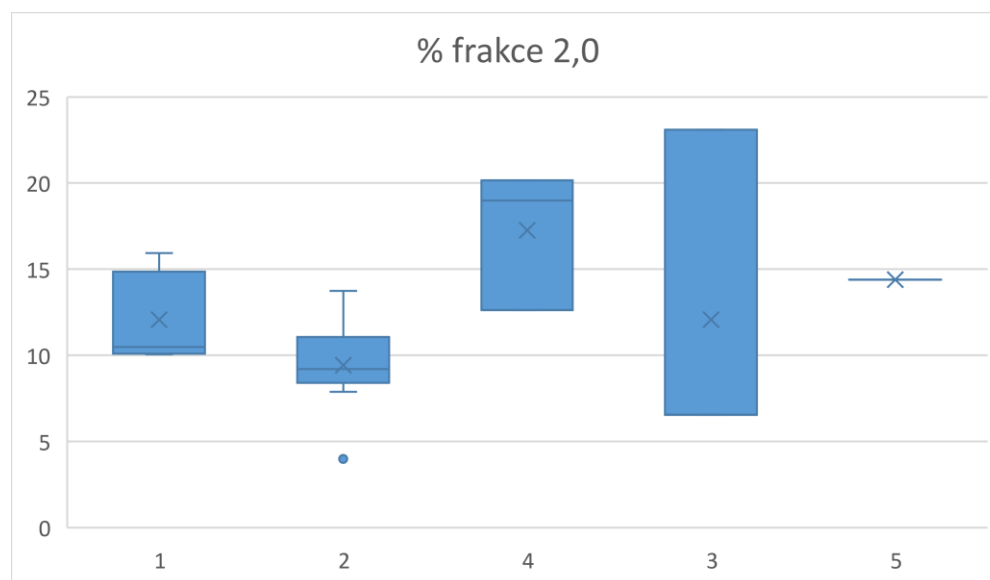
shluk 6	shluk 7
2	2
2	
0,48	
2,96	
9,74	
9,18	
7,35	
19,11	
34,81	
16,38	

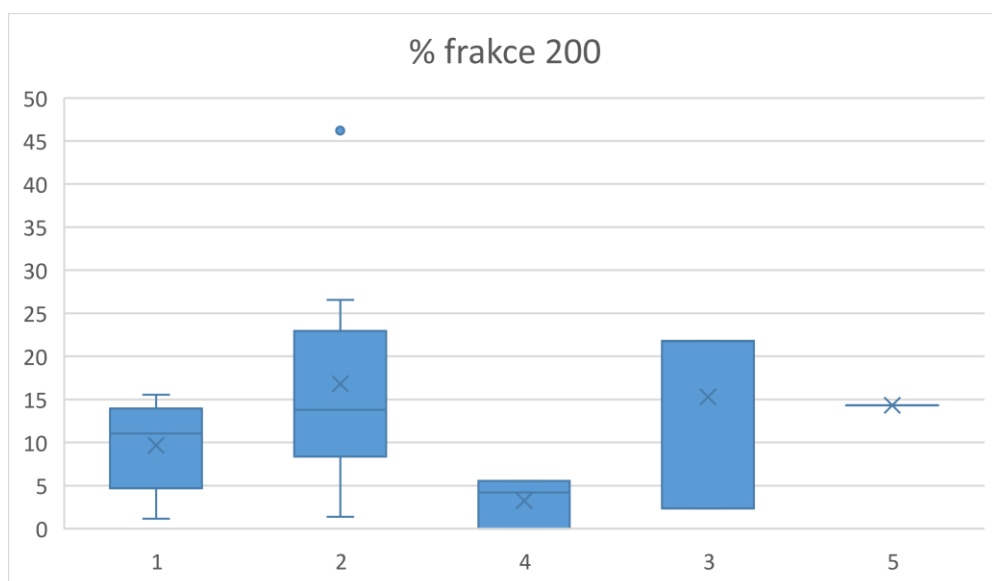
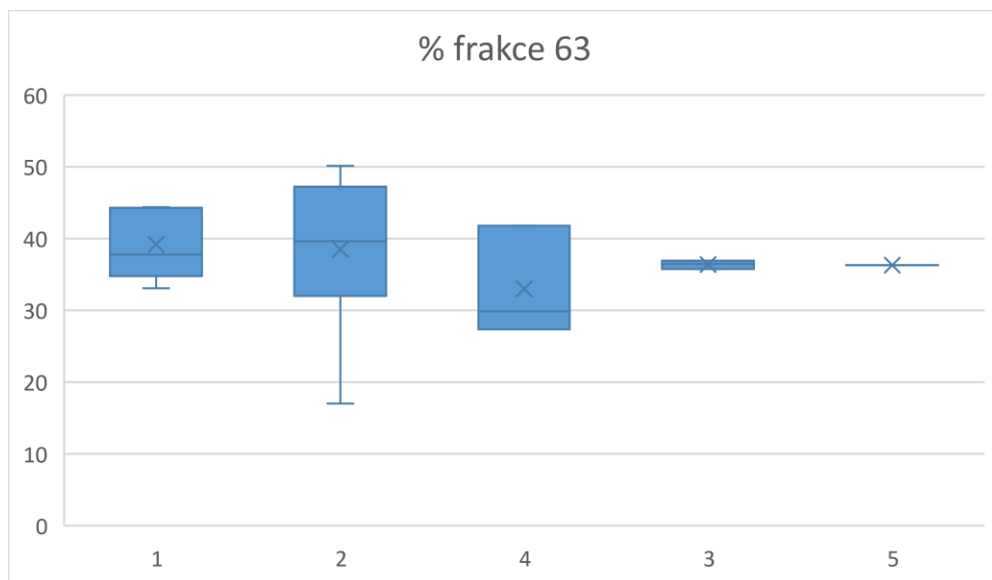
Shluky vytvořené na základě fytosnímků (3 shluky)

shluk 1	shluk 2	shluk 3
19	1	6
19		1
0,35		0,38
1,44		1,16
8,54		7,21
11,27		18,98
8,23		12,04
19,05		26,18
37,91		29,86
13,21		4,19

Na základě "BBcelk" byly lokality rozděleny do 5 shluků.
Jejich charakteristika na základě granulometrie je vizualizována v krabicových grafech.



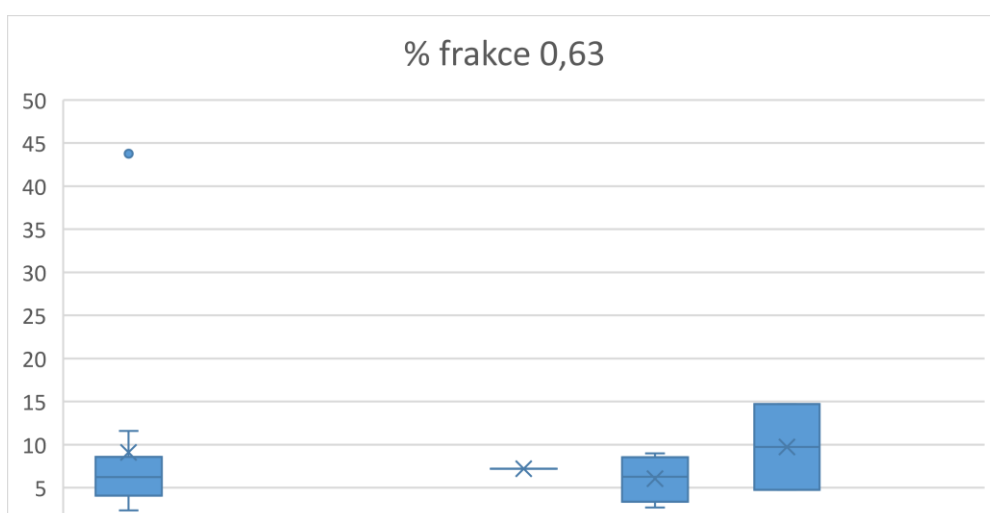
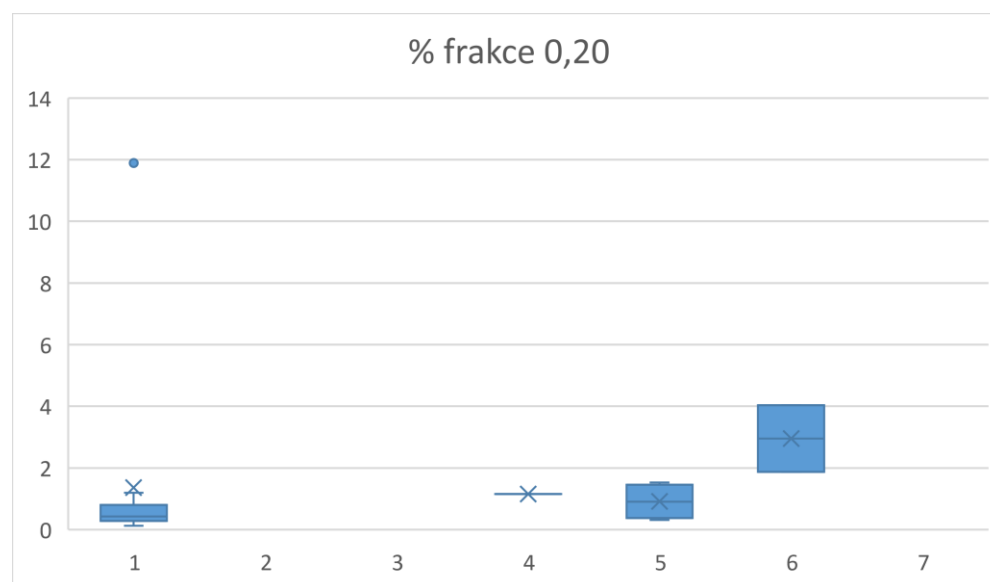
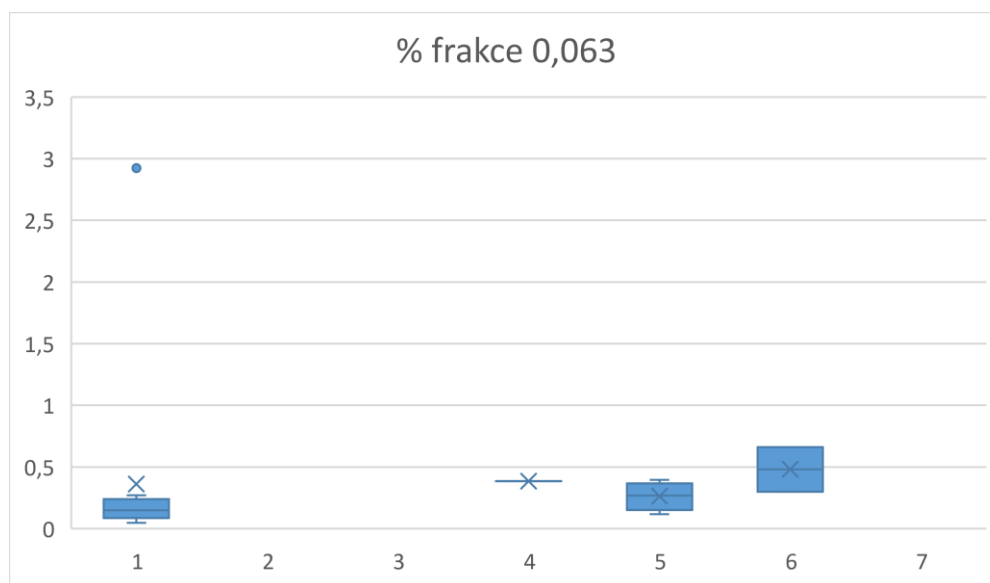


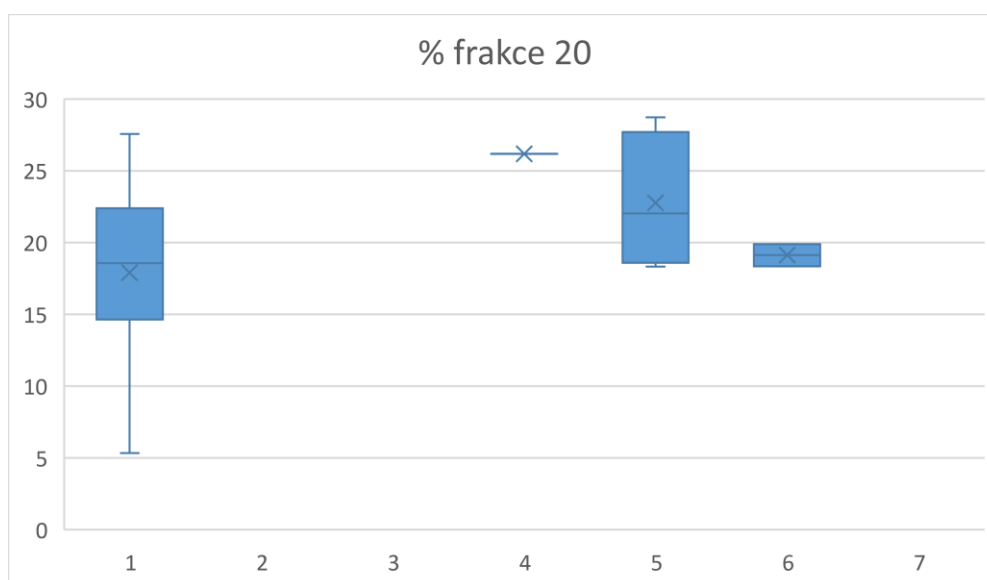
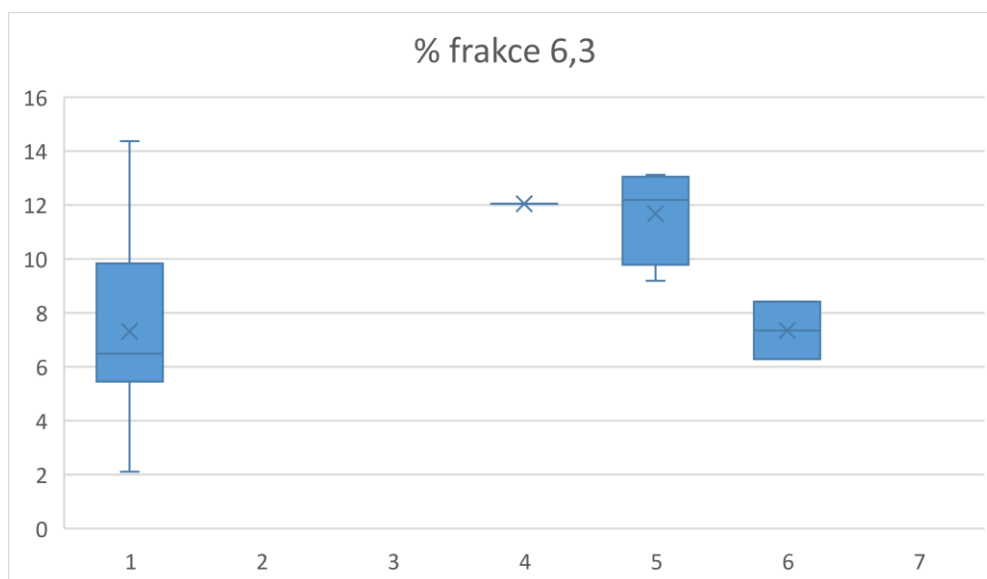
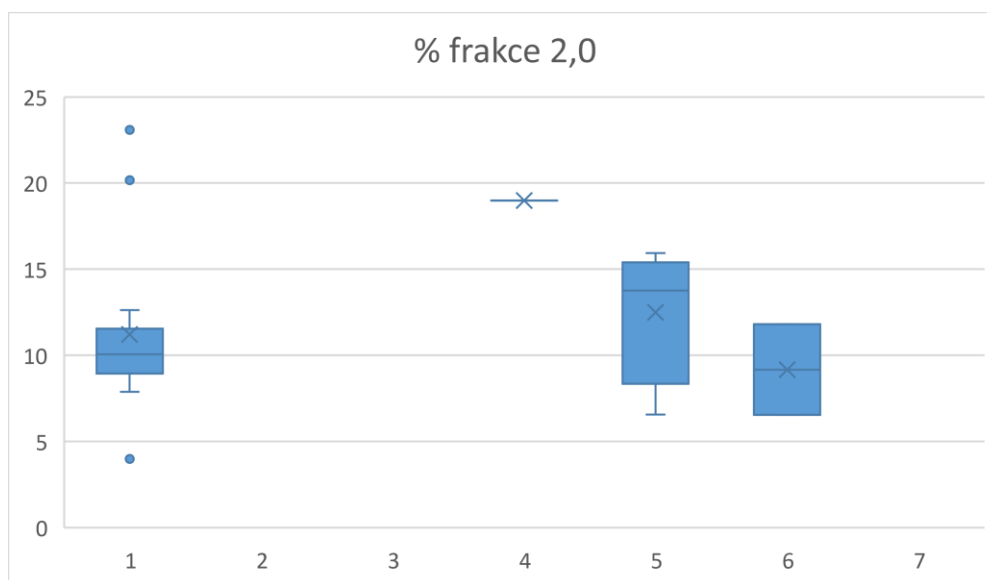


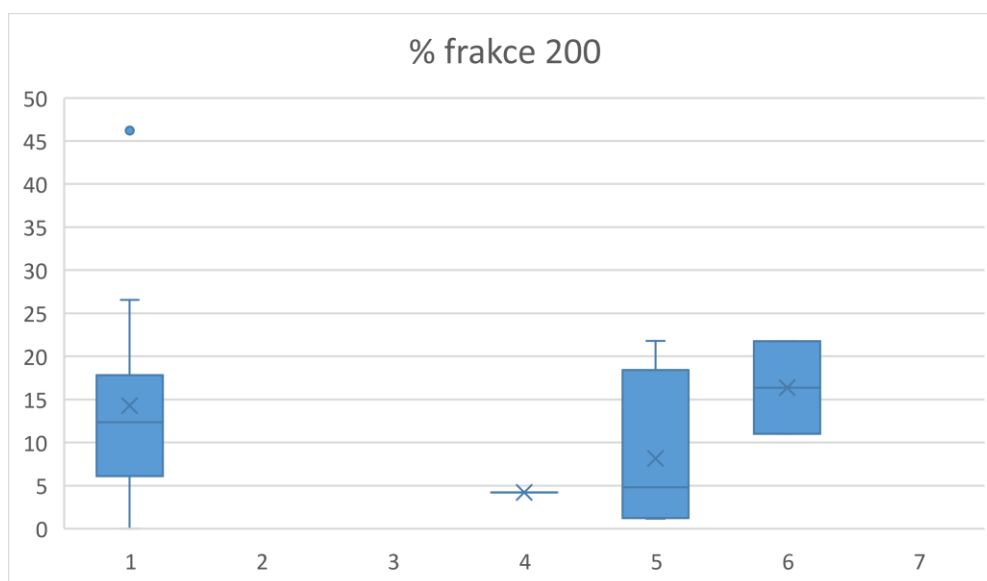
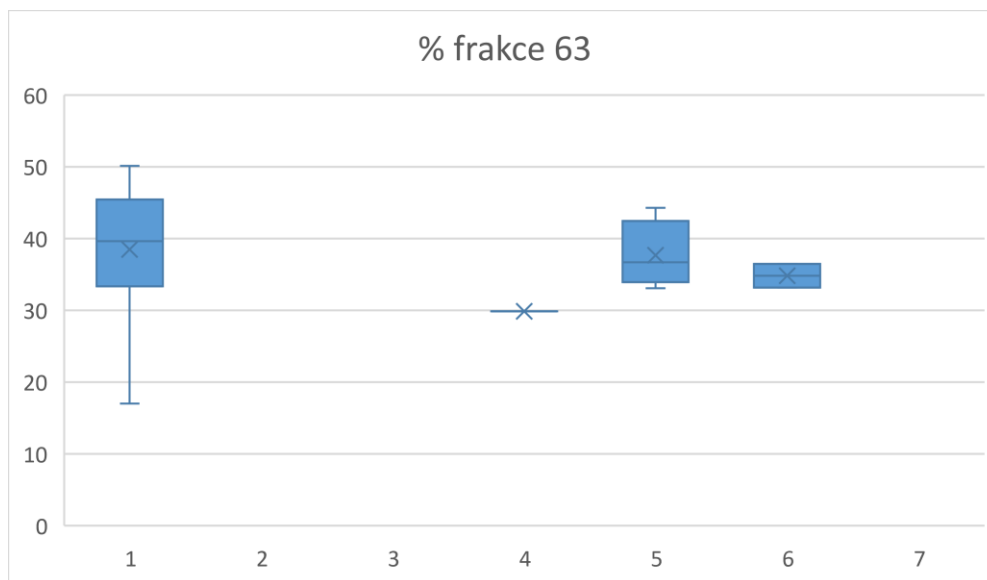
X0.063.frakce	X0.2.frakce	X0.63.frakce	X2.frakce
1 0,259614	1 1,199843	1 6,228962	1 10,11148
2 0,079154	2 0,259228	2 3,866146	2 7,89057
1 0,271387	1 0,794411	1 5,539304	1 10,48014
4 0,173315	4 0,802281	4 11,57856	4 12,62684
2 0,075453	2 0,243818	2 6,25732	2 9,200236
2 0,046706	2 0,12774	2 3,93056	2 8,965489
4 0,383609	4 1,155517	4 7,210694	4 18,98042
1 0,249331	1 0,588857	1 7,165619	1 15,93731
2 0,117173	2 0,309747	2 2,729528	2 13,74806
3 0,287272	3 1,531548	3 5,377123	3 6,558582
3 0,299649	3 1,876371	3 4,757834	3 6,546274
3 0,099131	3 0,299331	3 6,051018	3 23,08647
1 0,394758	1 1,226643	1 8,991969	1 13,75993
2 2,922807	2 11,89348	2 43,76103	2 10,31907
2 0,09385	2 0,422793	2 4,267535	2 9,961066
5 0,645774	5 2,098046	5 8,167228	5 14,38965
2 0,148843	2 0,510912	2 2,367653	2 3,988934
1 0,198206	1 0,309825	1 7,430065	1 10,06744
2 0,660296	2 4,034793	2 14,72357	2 11,8042
4 0,103875	4 0,332398	4 9,231848	4 20,16464
2 0,219023	2 0,533447	2 7,931899	2 8,925349

X6.3.frakce	X20.frakce	X63.frakce	X200.frakce
1 9,901178	1 22,19169	1 37,7611	1 12,34614
2 7,225066	2 14,49145	2 39,64615	2 26,54224
1 5,728426	1 17,48113	1 44,14866	1 15,55654
4 14,35999	4 27,55989	4 27,33905	4 5,560059
2 7,699697	2 18,55635	2 47,88766	2 10,07946
2 6,048761	2 16,95363	2 50,12472	2 13,8024
4 12,03961	4 26,18199	4 29,85522	4 4,192942
1 13,11973	1 28,71189	1 33,07176	1 1,155504
2 12,81956	2 24,6443	2 44,25275	2 1,378884
3 9,19014	3 18,32243	3 36,92416	3 21,80875
3 8,410486	3 19,87617	3 36,48129	3 21,75193
3 9,769866	3 22,58752	3 35,76334	3 2,343333
1 11,55879	1 19,40222	1 36,4805	1 8,185194
2 2,105424	2 5,324397	2 17,00907	2 6,664717
2 9,945954	2 19,26944	2 36,69808	2 19,34128
5 8,330538	5 15,79402	5 36,26924	5 14,30551
2 5,697617	2 10,22192	2 30,87087	2 46,19326
1 6,482117	1 20,11279	1 44,35967	1 11,03989
2 6,283585	2 18,35263	2 33,14133	2 10,99959
4 5,19892	4 23,1796	4 41,78872	4 0
2 4,803355	2 14,76932	2 46,54705	2 16,27056

Na základě "Fytosnímků" byly lokality rozděleny do 7 shluků.
Jejich charakteristika na základě granulometrie je vizualizována v krabicových grafech.



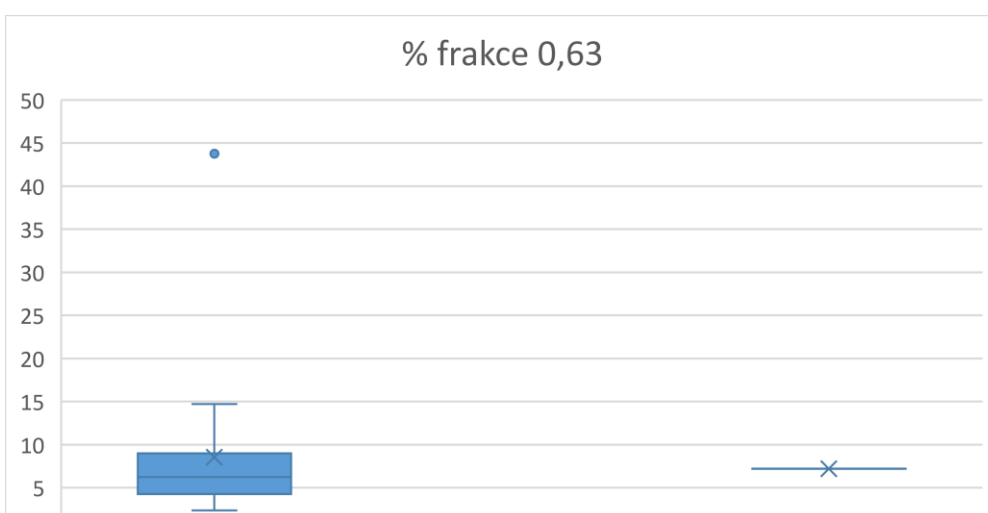
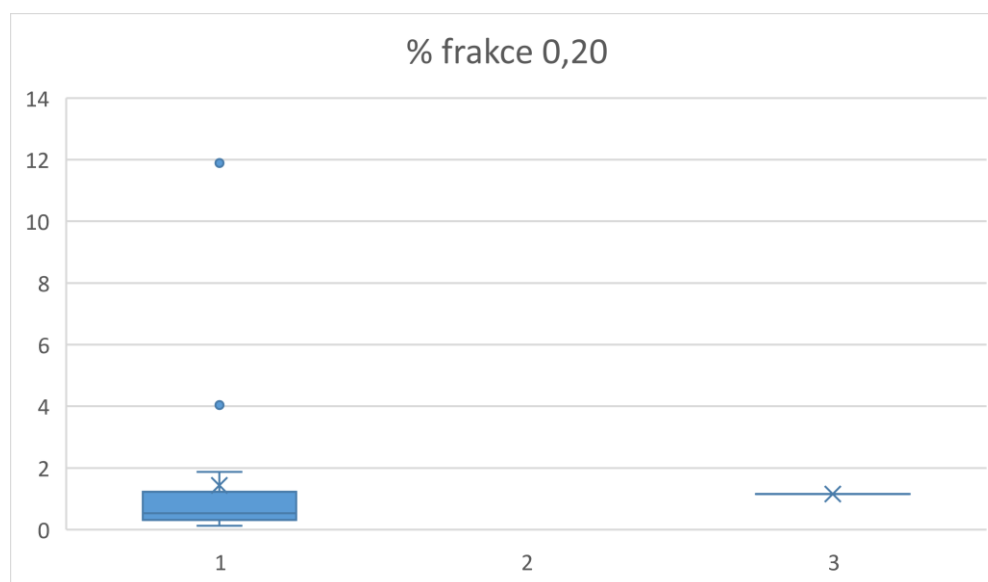
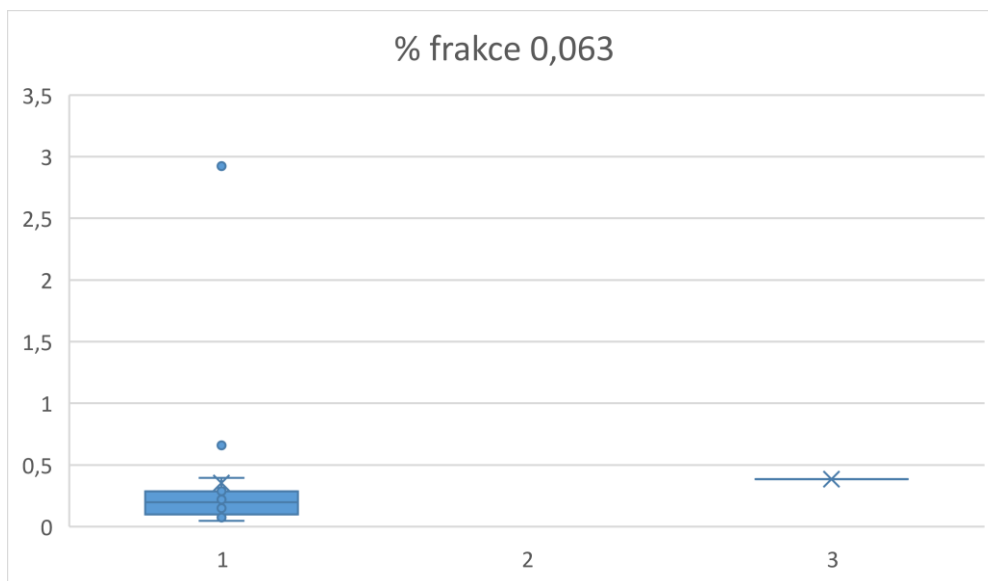


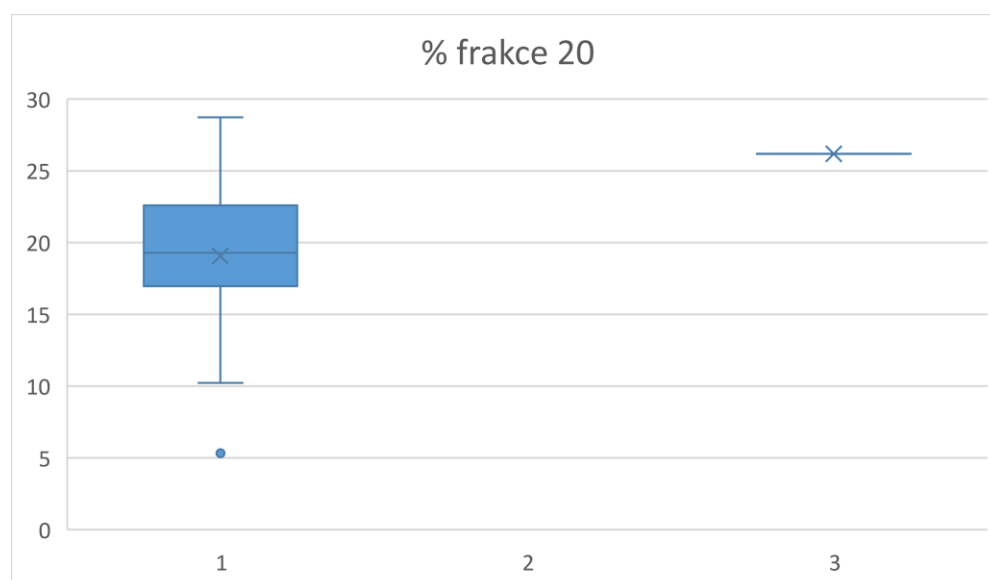
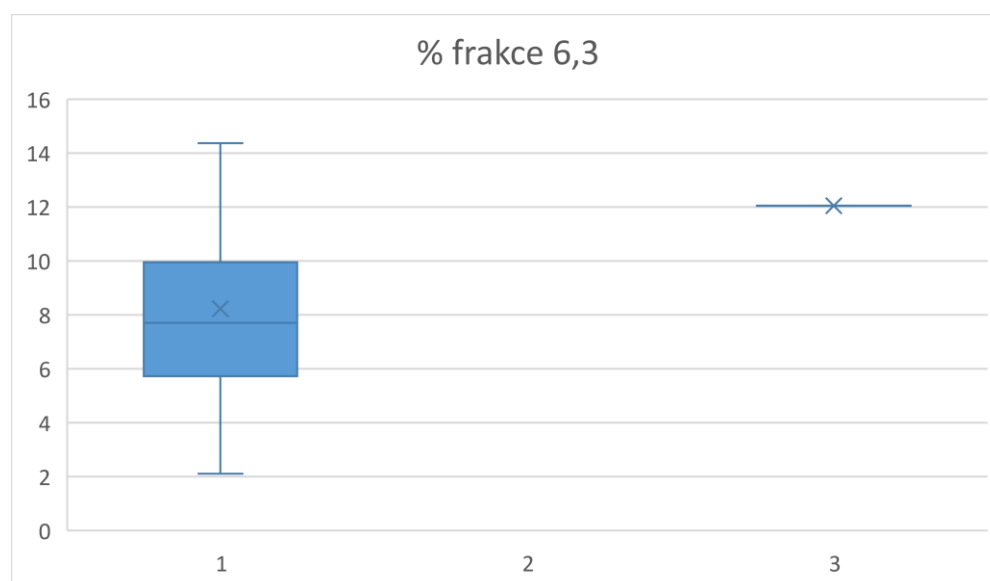
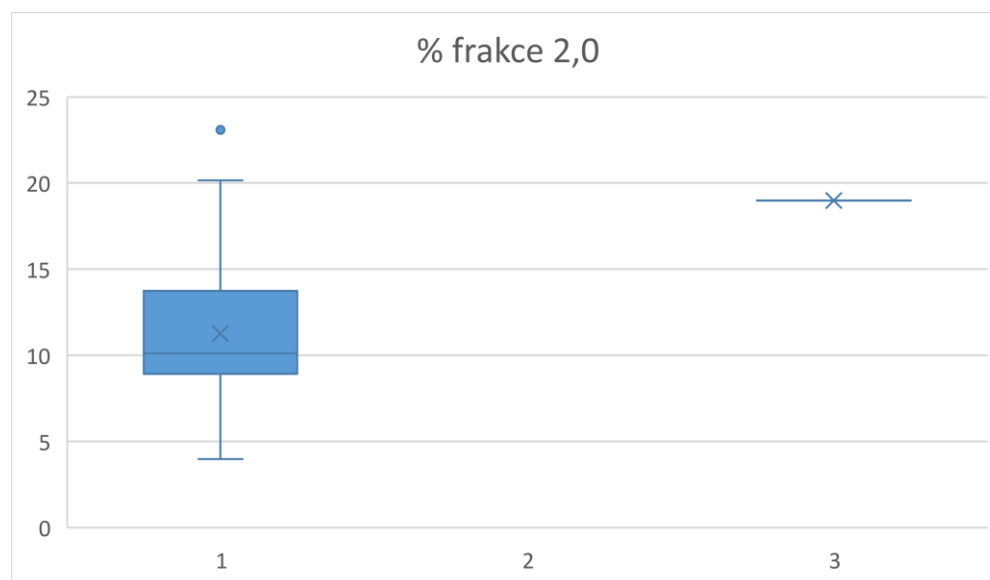


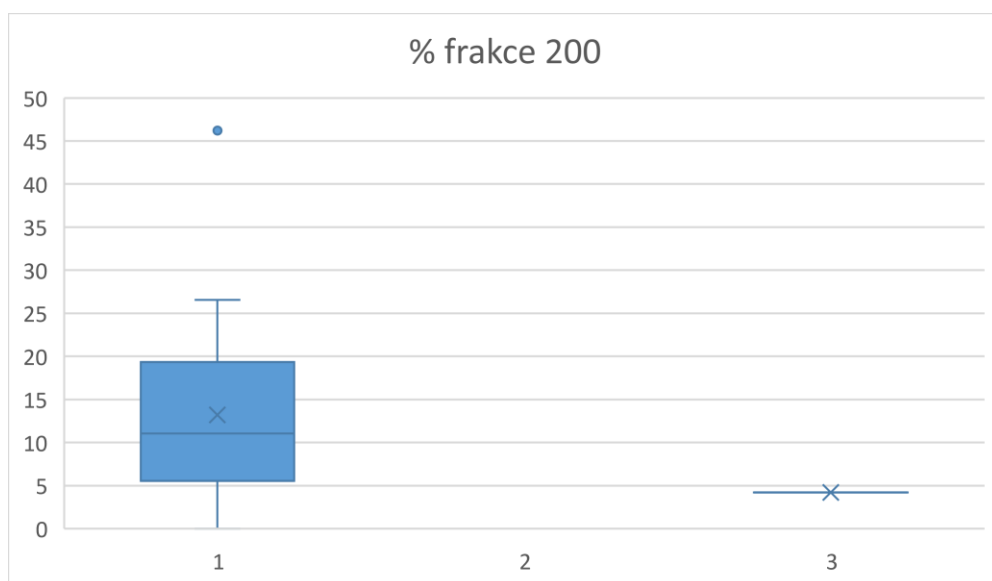
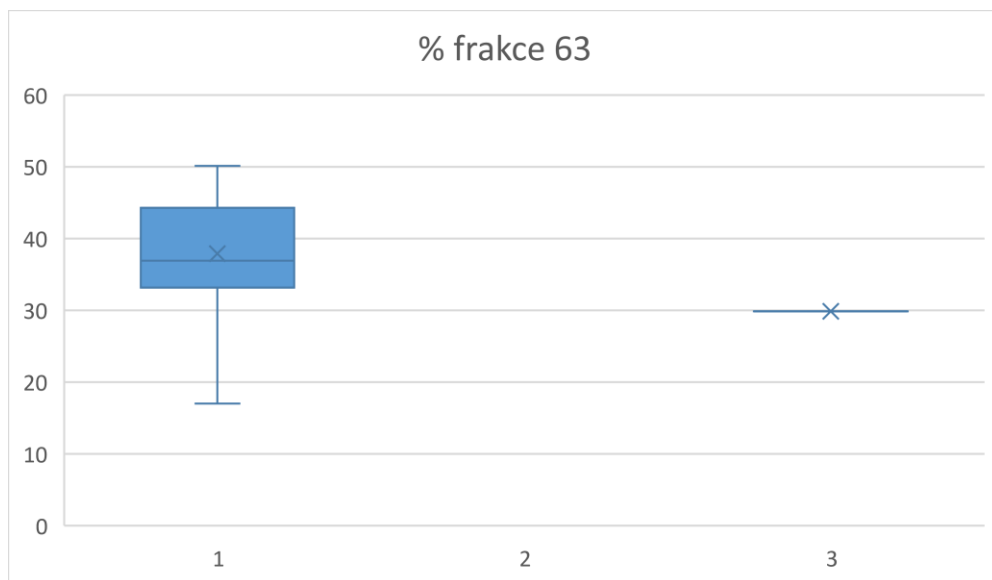
X0.063.frakce	X0.2.frakce	X0.63.frakce	X2.frakce
1 0,259614	1 1,199843	1 6,228962	1 10,11148
1 0,079154	1 0,259228	1 3,866146	1 7,89057
2	2	2	2
1 0,271387	1 0,794411	1 5,539304	1 10,48014
1 0,173315	1 0,802281	1 11,57856	1 12,62684
1 0,075453	1 0,243818	1 6,25732	1 9,200236
3	3	3	3
3	3	3	3
1 0,046706	1 0,12774	1 3,93056	1 8,965489
4 0,383609	4 1,155517	4 7,210694	4 18,98042
5 0,249331	5 0,588857	5 7,165619	5 15,93731
5 0,117173	5 0,309747	5 2,729528	5 13,74806
5 0,287272	5 1,531548	5 5,377123	5 6,558582
6 0,299649	6 1,876371	6 4,757834	6 6,546274
1 0,099131	1 0,299331	1 6,051018	1 23,08647
5 0,394758	5 1,226643	5 8,991969	5 13,75993
1 2,922807	1 11,89348	1 43,76103	1 10,31907
1 0,09385	1 0,422793	1 4,267535	1 9,961066
7	7	7	7
7	7	7	7
1 0,148843	1 0,510912	1 2,367653	1 3,988934
1 0,198206	1 0,309825	1 7,430065	1 10,06744
3	3	3	3
6 0,660296	6 4,034793	6 14,72357	6 11,8042
1 0,103875	1 0,332398	1 9,231848	1 20,16464
1 0,219023	1 0,533447	1 7,931899	1 8,925349

X6.3.frakce	X20.frakce	X63.frakce	X200.frakce
1 9,901178	1 22,19169	1 37,7611	1 12,34614
1 7,225066	1 14,49145	1 39,64615	1 26,54224
2	2	2	2
1 5,728426	1 17,48113	1 44,14866	1 15,55654
1 14,35999	1 27,55989	1 27,33905	1 5,560059
1 7,699697	1 18,55635	1 47,88766	1 10,07946
3	3	3	3
3	3	3	3
1 6,048761	1 16,95363	1 50,12472	1 13,8024
4 12,03961	4 26,18199	4 29,85522	4 4,192942
5 13,11973	5 28,71189	5 33,07176	5 1,155504
5 12,81956	5 24,6443	5 44,25275	5 1,378884
5 9,19014	5 18,32243	5 36,92416	5 21,80875
6 8,410486	6 19,87617	6 36,48129	6 21,75193
1 9,769866	1 22,58752	1 35,76334	1 2,343333
5 11,55879	5 19,40222	5 36,4805	5 8,185194
1 2,105424	1 5,324397	1 17,00907	1 6,664717
1 9,945954	1 19,26944	1 36,69808	1 19,34128
7	7	7	7
7	7	7	7
1 5,697617	1 10,22192	1 30,87087	1 46,19326
1 6,482117	1 20,11279	1 44,35967	1 11,03989
3	3	3	3
6 6,283585	6 18,35263	6 33,14133	6 10,99959
1 5,19892	1 23,1796	1 41,78872	1 0
1 4,803355	1 14,76932	1 46,54705	1 16,27056

Na základě "Fytosnímků" byly lokality rozděleny do 3 shluků.
Jejich charakteristika na základě granulometrie je vizualizována v krabicových grafech.







X0.063.frakce	X0.2.frakce	X0.63.frakce	X2.frakce
1 0,259614	1 1,199843	1 6,228962	1 10,11148
1 0,079154	1 0,259228	1 3,866146	1 7,89057
2	2	2	2
1 0,271387	1 0,794411	1 5,539304	1 10,48014
1 0,173315	1 0,802281	1 11,57856	1 12,62684
1 0,075453	1 0,243818	1 6,25732	1 9,200236
1 0,046706	1 0,12774	1 3,93056	1 8,965489
3 0,383609	3 1,155517	3 7,210694	3 18,98042
1 0,249331	1 0,588857	1 7,165619	1 15,93731
1 0,117173	1 0,309747	1 2,729528	1 13,74806
1 0,287272	1 1,531548	1 5,377123	1 6,558582
1 0,299649	1 1,876371	1 4,757834	1 6,546274
1 0,099131	1 0,299331	1 6,051018	1 23,08647
1 0,394758	1 1,226643	1 8,991969	1 13,75993
1 2,922807	1 11,89348	1 43,76103	1 10,31907
1 0,09385	1 0,422793	1 4,267535	1 9,961066
1 0,148843	1 0,510912	1 2,367653	1 3,988934
1 0,198206	1 0,309825	1 7,430065	1 10,06744
1 0,660296	1 4,034793	1 14,72357	1 11,8042
1 0,103875	1 0,332398	1 9,231848	1 20,16464
1 0,219023	1 0,533447	1 7,931899	1 8,925349

X6.3.frakce	X20.frakce	X63.frakce	X200.frakce
1 9,901178	1 22,19169	1 37,7611	1 12,34614
1 7,225066	1 14,49145	1 39,64615	1 26,54224
2	2	2	2
1 5,728426	1 17,48113	1 44,14866	1 15,55654
1 14,35999	1 27,55989	1 27,33905	1 5,560059
1 7,699697	1 18,55635	1 47,88766	1 10,07946
1 6,048761	1 16,95363	1 50,12472	1 13,8024
3 12,03961	3 26,18199	3 29,85522	3 4,192942
1 13,11973	1 28,71189	1 33,07176	1 1,155504
1 12,81956	1 24,6443	1 44,25275	1 1,378884
1 9,19014	1 18,32243	1 36,92416	1 21,80875
1 8,410486	1 19,87617	1 36,48129	1 21,75193
1 9,769866	1 22,58752	1 35,76334	1 2,343333
1 11,55879	1 19,40222	1 36,4805	1 8,185194
1 2,105424	1 5,324397	1 17,00907	1 6,664717
1 9,945954	1 19,26944	1 36,69808	1 19,34128
1 5,697617	1 10,22192	1 30,87087	1 46,19326
1 6,482117	1 20,11279	1 44,35967	1 11,03989
1 6,283585	1 18,35263	1 33,14133	1 10,99959
1 5,19892	1 23,1796	1 41,78872	1 0
1 4,803355	1 14,76932	1 46,54705	1 16,27056

	X0.063.fra	X0.2.frakce	X0.63.frakce	X2.frakce	X6.3.frakce	X20.frakce	X63.frakce	X200.frakce	
L73340_Dolžleb	0,259614	1,199843	6,228962	10,11148	9,901178	22,19169	37,7611	12,34614	
L73390_V 7 Laguna	0,558268	1,928192	5,256297	7,50018	9,660583	19,51731	32,96194	22,61723	
L73815_Prostžleb	0,079154	0,259228	3,866146	7,89057	7,225066	14,49145	39,64615	26,54224	
L74250_Rozbělesy	0,271387	0,794411	5,539304	10,48014	5,728426	17,48113	44,14866	15,55654	
L75095_Dobkovice	0,173315	0,802281	11,57856	12,62684	14,35999	27,55989	27,33905	5,560059	
L75190_Těchlovice	0,075453	0,243818	6,25732	9,200236	7,699697	18,55635	47,88766	10,07946	
L75640_Povrly	0,046706	0,12774	3,93056	8,965489	6,048761	16,95363	50,12472	13,8024	přemenovat na L75635
L76340_Únl - Vých přís	0,383609	1,155517	7,210694	18,98042	12,03961	26,18199	29,85522	4,192942	
R73165_Hřensko - pláž	0,249331	0,588857	7,165619	15,93731	13,11973	28,71189	33,07176	1,155504	
R73200_Dolžleb - přív	0,117173	0,309747	2,729528	13,74806	12,81956	24,6443	44,25275	1,378884	
R73393_V 4 Plážový	0,2043	1,459371	5,117069	6,416491	9,541285	19,40829	37,1499	20,70329	zprůměrovat V4 a V5
R73393_V 5 Plážový	0,370245	1,603725	5,637178	6,700672	8,838996	17,23656	36,69841	22,91421	
R73435_V 3 Plážový	0,299649	1,876371	4,757834	6,546274	8,410486	19,87617	36,48129	21,75193	
R73445_V 2 Promývaný	0,239815	1,918079	6,219178	7,538058	9,834136	17,58463	31,45453	25,21158	
R73472_V 1 Promývaný	0,351942	1,707828	5,935641	6,624632	7,463229	17,22289	36,74665	23,94719	
R73515_RefV	0,626263	1,373737	4,04	3,96	7,025	17,08611	24,63889	41,25	
R74015_Děčín - Heger	0,099131	0,299331	6,051018	23,08647	9,769866	22,58752	35,76334	2,343333	
R74150_ústí Ploučnice	0,394758	1,226643	8,991969	13,75993	11,55879	19,40222	36,4805	8,185194	
R74460_Křešice	2,922807	11,89348	43,76103	10,31907	2,105424	5,324397	17,00907	6,664717	
R74820_Nebočady - V	0,09385	0,422793	4,267535	9,961066	9,945954	19,26944	36,69808	19,34128	
R74935_Jakuby	0,645774	2,098046	8,167228	14,38965	8,330538	15,79402	36,26924	14,30551	
R75040_Lom Těchlovice	0,141483	0,878548	11,62263	8,53749	4,496168	12,34365	29,25127	32,72877	
R75485_Malé Březno	0,148843	0,510912	2,367653	3,988934	5,697617	10,22192	30,87087	46,19326	
R75915_Valtířov	0,198206	0,309825	7,430065	10,06744	6,482117	20,11279	44,35967	11,03989	
R76135_Svádov	0,660296	4,034793	14,72357	11,8042	6,283585	18,35263	33,14133	10,99959	
R76525_Mariánský m	0,103875	0,332398	9,231848	20,16464	5,19892	23,1796	41,78872	0	
R76575_Ústí n Labem	0,219023	0,533447	7,931899	8,925349	4,803355	14,76932	46,54705	16,27056	
R78595_Lovosice	0,062996	0,537004	4,296	15,204	10,035	21,13167	48,73333	0	
RD_Drážďany	0,311118	0,879161	6,280989	12,59634	13,27285	27,99184	33,2092	5,458503	
RW_Wittenberg	0	10	39,16	18,84	16,9	13,76667	1,333333	0	